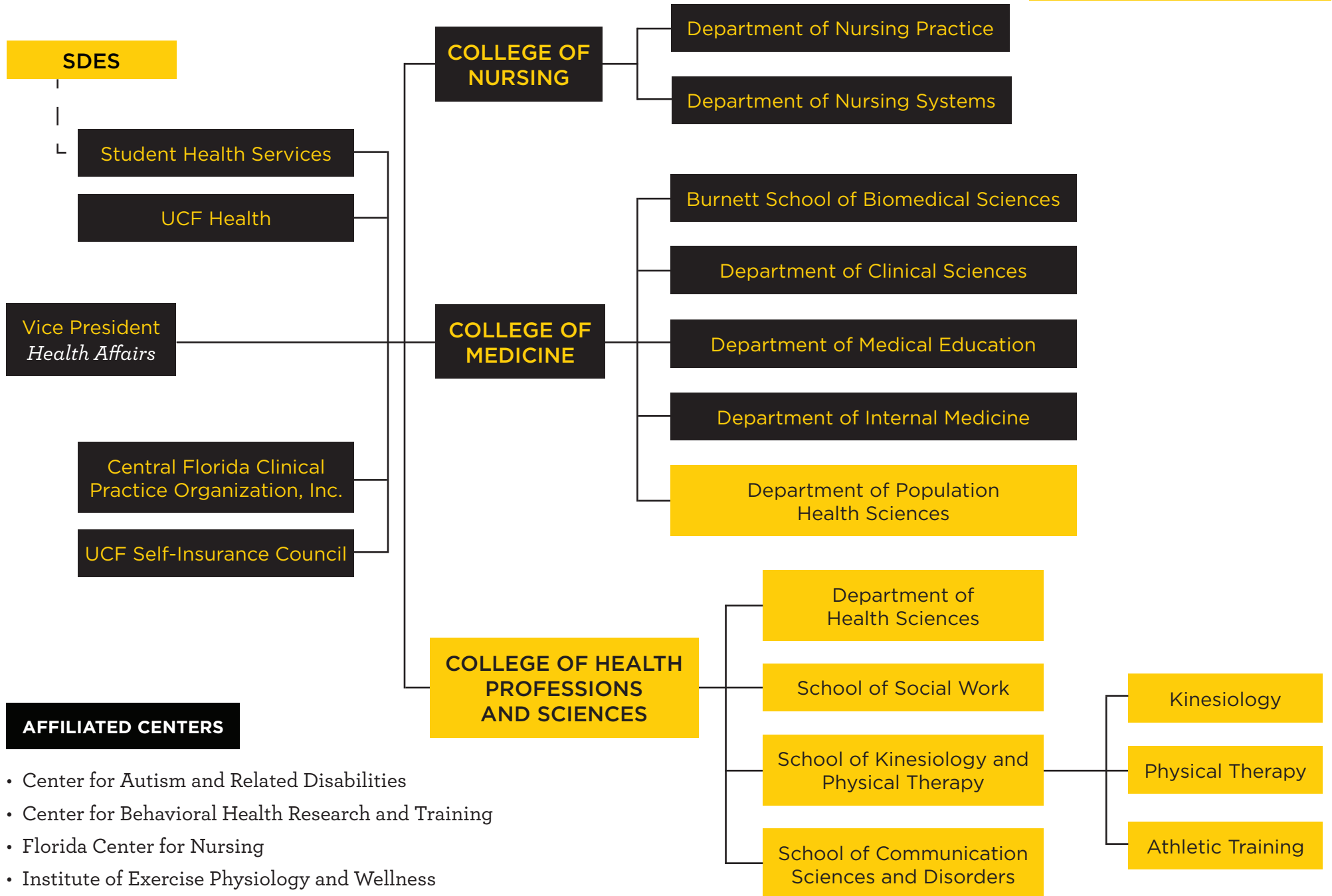


ACADEMIC HEALTH SCIENCES CENTER

ORGANIZATIONAL CHART

Gold boxes indicate new schools or organizational changes



AFFILIATED CENTERS

- Center for Autism and Related Disabilities
- Center for Behavioral Health Research and Training
- Florida Center for Nursing
- Institute of Exercise Physiology and Wellness



College of Health Professions and Sciences



Interim Dean
Dr. Jeffrey Stout



Senior Administrative Assistant
Cindy Rahrle

